




Belmont Street, Worcester, WR3 8NN

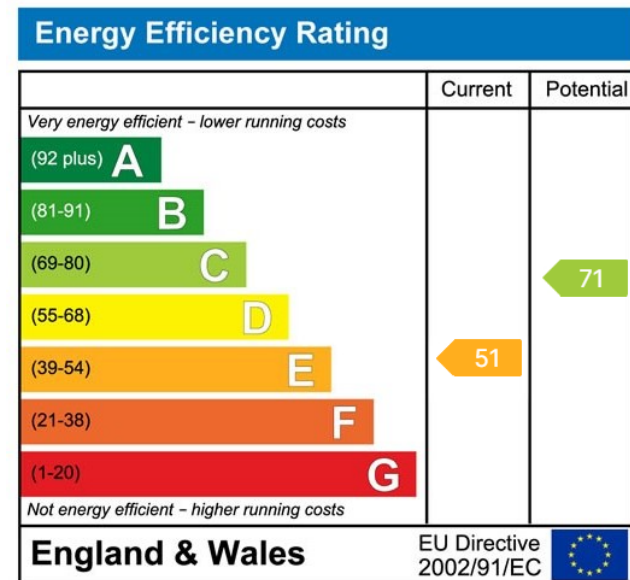
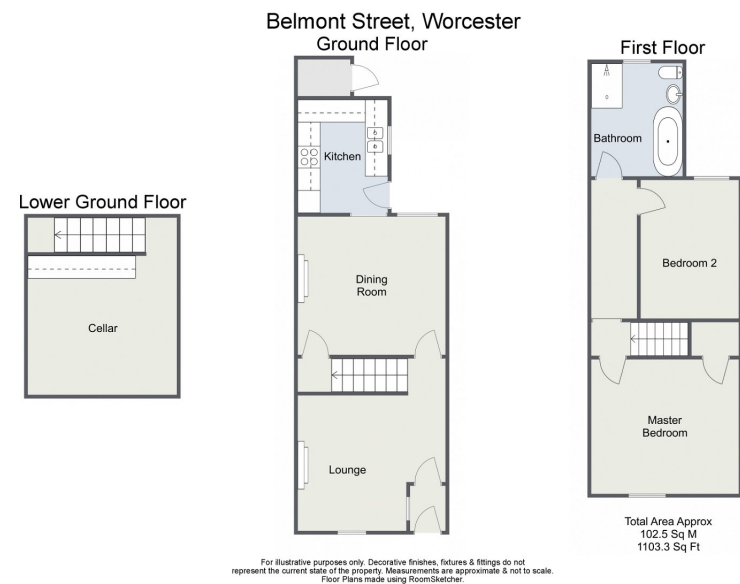
Offers Over £200,000

 2  1  2



A charming two double bedroom home situated close to the city, train stations and all local amenities this is the perfect first time buyer or investment. The property has been well looked after and has been modernised whilst still retaining feature fireplaces. The property in brief comprises; lounge, dining room, kitchen, two bedrooms and bathroom. The property benefits from gas central heating, double glazing, cellar and south facing rear garden. Viewing is recommended to appreciate the size and location.





For more information on this house or to arrange a viewing please call the office on:

01905 958 290

Alternatively, you can scan the QR to view all of the details of this property online.



arden
ESTATE AGENTS